

**GIUNTI ISOLANTI MONOLITICI
MONOLITHIC INSULATING JOINTS**

**GAS LINEA
GAS MAIN PIPELINE
PN25**

Giunti isolanti di linea
UNI 10285

Main pipeline insulating joints
UNI 10285

Classe: PN25 / MOP25

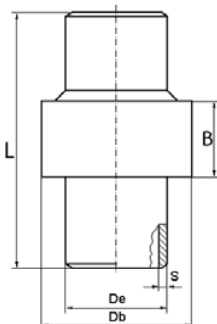
Class: PN25 / MOP25

Applicazioni principali:
Trasporto e distribuzione di GAS
(UNI EN 1594), reti di distribuzione
(UNI 9165), impianti di derivazione
del gas (UNI 9860).

Main applications:
Gas supply system (UNI EN
1594), gas distribution network
(UNI 9165), gas service pipe (UNI
9860).



T	R	RT	RP	P	Dove: T=Max temperatura di esercizio R=Resistenza di isolamento in aria a 1000 Volt c.c. RT=Tensione elettrica di prova c.a. RP=Tensione elettrica di perforazione c.a. P=pressione nominale	Where: T=Max operating temperature R=Electric resistance in air at 1000 Volt d.c. RT=Dielectric test a.c. RP=Dielectric strength c.a. P=Nominal pressure
70°C	>100 Mohm	3.5 KV	>10 KV	25 Bar 2.5 MPa		
U.R.=55% t=22°C (prove di officina/ factory tests)						



Certificati rilasciati
Released certificates

- ✓ EN10204 3.1
- ✓ EN-UNI-CEI 17050-1
- ✓ CE conformity

ND	DN	De	Materiale tubo Pipe pups mat.	S	L	Db	B	Tipo Type	!
1/2"	15	21.3	Gr.B/L245	3.6	230	49	34	B3	(*)
3/4"	20	26.7	Gr.B/L245	3.9	245	51	35	B3	(*)
1"	25	33.4	Gr.B/L245	3.4	250	67	50	F1/C	(*)
1 1/4"	32	42.4	Gr.B/L245	3.6	300	76	50	F1	(*)
1 1/2"	40	48.3	Gr.B/L245	3.6	300	83	58	F1	(*)
2"	50	60.3	Gr.B/L245	3.9	350	88	60	NG5/C	(*)
2 1/2"	65	76.1	L245	4.8	350	113	65	NG5/C	(*)
3"	80	88.9	Gr.B/L245	4.8	400	125	65	NG5/C	-
4"	100	114.3	Gr.B/L245	4.8	400	150	75	NG5/C	-
5"	125	141.3	Gr.B/L245	4.8	500	191	92	NG5/C	-
6"	150	168.3	Gr.B/L245	5.6	500	215	97	NG5/C	-
8"	200	219.1	Gr.B/L245	6.4	500	273	106	NG5/C	-
10"	250	273	Gr.B/L245	6.4	700	323	116	NG5/C	-
12"	300	323.8	Gr.B/L245	6.4	700	382	154	NG5/C	-
14"	350	355.6	Gr.B/L245	7.1	900	426	180	NG5/B3	-
16"	400	406.4	Gr.B/L245	7.1	900	470	175	NG5/B3	-
18"	450	457.2	Gr.B/L245	7.1	900	518	200	NG5/B	-
20"	500	508	Gr.B/L245	7.1	1000	605	220	NG4/B	-
22"	550	558.8	Gr.B/L245	8	1000	660	234	NG4/B	-
24"	600	609.6	Gr.B/L245	8.8	1000	726	255	NG4/B	-
26"	650	660.4	Gr.B/L245	8.8	1000	766	255	NG4/B	(*)
28"	700	711.2	Gr.B/L245	8.8	1200	830	280	NG4/B	(*)
30"	750	762	Gr.B/L245	8.8	1200	870	280	NG4/B	(*)
In.	mm	Dimensioni in mm / Dimensions in mm							

(*): Diametro non previsto nella UNI 10285.
Tipo: vedi pubblicazione NG-IJTY-01.
Le dimensioni di ingombro, le foto e le figure sono a solo titolo indicativo.

(*) Item not provided in UNI 10285.
Type : please refer to Nuovagiungas publication NG-IJTY-01.
Overall dimensions, drawings and images for illustrative purpose only.

Materiale: Acciaio API 5L / ISO 3183 / EN10208-2
Estremità a saldare: API 5L / ISO 3183 / EN10208-2
(smusso =30° +5/-0°; spalla =1.6mm)
Norme e codici: UNI 10285, NACE SP0286-86, D.M. 24/11/1984, D.M. 16/04/2008,
D.P.R. 23/03/1998 N° 126 - 94/9/CE - Atex - II 2 GD Zona 1 e 21 d T6
A richiesta: 97/23/CE - PED

Materials: Steel API 5L / ISO 3183 / EN10208-2
Weld ends: API 5L / ISO 3183 / EN10208-2
(bevel= 30° +5/-0° root= 1.6mm +/-0.8mm)
Rules and norms: UNI 10285, NACE SP0286, D.M. 24/11/1984, D.M. 16/04/2008,
D.P.R. 23/03/1998 N° 126 - 94/9/CE - Atex - II 2 GD Zona 1 e 21 d T6
On request: 97/23/CE - PED

Scheda tecnica / Technical data sheet : NG025-01/C rev.3 issued 08/11/10 pag. 1/1



Nuovagiungas srl
41043 FORMIGINE (MO) Italy via A. Moro 26/28
Tel.059-578611-Fax 059-570633-Email ng@nuovagiungas.com
Stab. 1/PRODUZIONE E MAGAZZINO:via C.Prampotini 30 - 41043 Formigine MO Italy
Stab.2/SEDE LEGALE E PRODUZIONE:via A.Moro 26,28 - 41043 Formigine MO Italy



II 2 GD Zona 1 e 21 d T6
Tech. file N° AX001 (Notified body N°1370)



ISO 9001:2008
Quality management System Approved
Certificate No.: LRC 160036