

GIUNTI ISOLANTI MONOLITICI  
MONOLITHIC INSULATING JOINTS

LINEA  
MAIN PIPELINE  
**PN100**

Giunti isolanti di linea  
PN100

Main pipeline insulating joints  
PN100

Classe: PN100 / MOP100

Class: PN100 / MOP100

Applicazioni principali:  
Trasporto e distribuzione di GAS,  
reti di distribuzione gas, acqua ed  
altri fluidi<sup>(\*)</sup>, impianti.

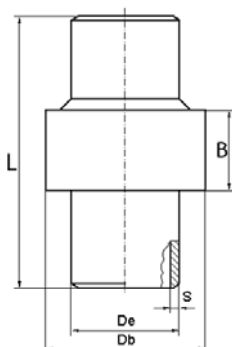
(\*) La lista dei fluidi compatibili disponibile a  
richiesta

Main applications:  
Gas supply system, gas, water or  
other fluid<sup>(\*)</sup> distribution network,  
plant.

(\*) Allowed fluid available upon request



T	R	RT	RP	P	Dove: T=Max temperatura di esercizio R=Resistenza di isolamento in aria a 1000 Volt c.c. RT=Tensione elettrica di prova c.a. RP=Tensione elettrica di perforazione c.a. P=pressione nominale	Where: T=Max operating temperature R=Electric resistance in air at 1000 Volt d.c. RT=Dielectric test a.c. RP=Dielectric strength c.a. P=Nominal pressure
70°C	>100 Mohm	3.5 KV	>10 KV	100 Bar 10,0 MPa		
U.R.=55% t=22°C (prove di officina/ factory tests)						



Certificati rilasciati  
Released certificates

- ✓ EN10204 3.1
- ✓ EN-UNI-CEI 17050-1
- ✓ CE conformity

ND	DN	De	Materiale tubo Pipe pups mat.	S	L	Db	B	Tipo Type
1/2"	15	21.3	Gr.B/L245	3.2	250	60	59	F2(F1)
3/4"	20	26.7	Gr.B/L245	3.2	250	65	60	F2(F1)
1"	25	33.4	Gr.B/L245	3.4	250	75	60	F1(F2)
1 1/4"	32	42.4	Gr.B/L245	3.6	300	83	68	F2(F1)
1 1/2"	40	48.3	Gr.B/L245	3.7	300	95	86	F1(F2)
2"	50	60.3	Gr.B/L245	3.9	350	114	104	NG5/C
2 1/2"	65	76.1	L245	5.5	350	132	117	NG5/C
3"	80	88.9	Gr.B/L245	5.5	500	155	123	NG5/C
4"	100	114.3	Gr.B/L245	6	500	190	128	NG5/C
5"	125	141.3	Gr.B/L245	6.5	600	217	148	NG5/C
6"	150	168.3	X52/L360	7.1	600	248	161	NG5/C
8"	200	219.1	X52/L360	8.2	600	297	183	NG5/C
10"	250	273	X52/L360	9.3	800	364	202	NG5/C
12"	300	323.8	X52/L360	9.5	800	430	223	NG5/C
14"	350	355.6	X52/L360	12.7	1000	455	231	NG4/B
16"	400	406.4	X52/L360	12.7	1000	540	280	NG4/B
18"	450	457.2	X52/L360	14.3	1000	600	290	NG4/B
20"	500	508	X52/L360	15.9	1200	684	308	NG4/B
22"	550	558.8	X52/L360	17.5	1200	730	340	NG4/B
24"	600	609.6	X52/L360	19	1200	810	360	NG4/B
26"	650	660.4	X52/L360	19	1200	845	390	NG4/B
28"	700	711.2	X52/L360	19	1300	890	400	NG4/B
30"	750	762	X52/L360	19	1300	970	421	NG4/B
In.	mm	Dimensioni in mm / Dimensions in m						

Tipo: vedi pubblicazione NG-IJTY-01.  
Le dimensioni di ingombro, le foto e le figure sono a solo titolo indicativo.

Type: please refer to Nuovagiungas publication NG-IJTY-01.  
Overall dimensions, drawings and images for illustrative purpose only.

**Materiale:** Acciaio API 5L / ISO 3183 / EN10208-2  
**Estremità a saldare:** API 5L / ISO 3183 / EN10208-2  
(smusso =30° +5/-0° ; spalla =1.6mm)  
**Norme e codici:** NACE RP0286-86, D.M. 24/11/1984, D.M. 16/04/2008,  
D.P.R. 23/03/1998 N° 126 - 94/9/CE - Atex - II 2 GD Zona 1 e 21 d T6  
A richiesta: 97/23/CE - PED

**Materials:** Steel API 5L / ISO 3183 / EN10208-2  
**Weld ends:** API 5L / ISO 3183 / EN10208-2  
(bevel= 30° +5/-0° root= 1.6mm +/-0.8mm)  
**Rules and norms:** NACE SP0286, D.M. 24/11/1984, D.M. 16/04/2008,  
D.P.R. 23/03/1998 N° 126 - 94/9/CE - Atex - II 2 GD Zona 1 e 21 d T6  
On request: 97/23/CE - PED

Scheda tecnica / Technical data sheet : NG100-01/C rev.2 issued 18/06/09 pag. 1/1



**NUOVAGIUNGAS**  
Nuovagiungas srl  
41043 FORMIGINE (MO) Italy via A. Moro 26/28  
Tel.059-578611-Fax 059-570633-Email ng@nuovagiungas.com  
Stab. 1/PRODUZIONE E MAGAZZINO:via C.Prampolini 30 - 41043 Formigine MO Italy  
Stab.2/SEDE LEGALE E PRODUZIONE:via A.Moro 26,28 - 41043 Formigine MO Italy



II 2 GD Zona 1 e 21 d T6  
Tech. file N° AX001 (Notified body N°1370)



ISO 9001:2000  
Quality management System Approved  
Certificate No.: LRC 160036